

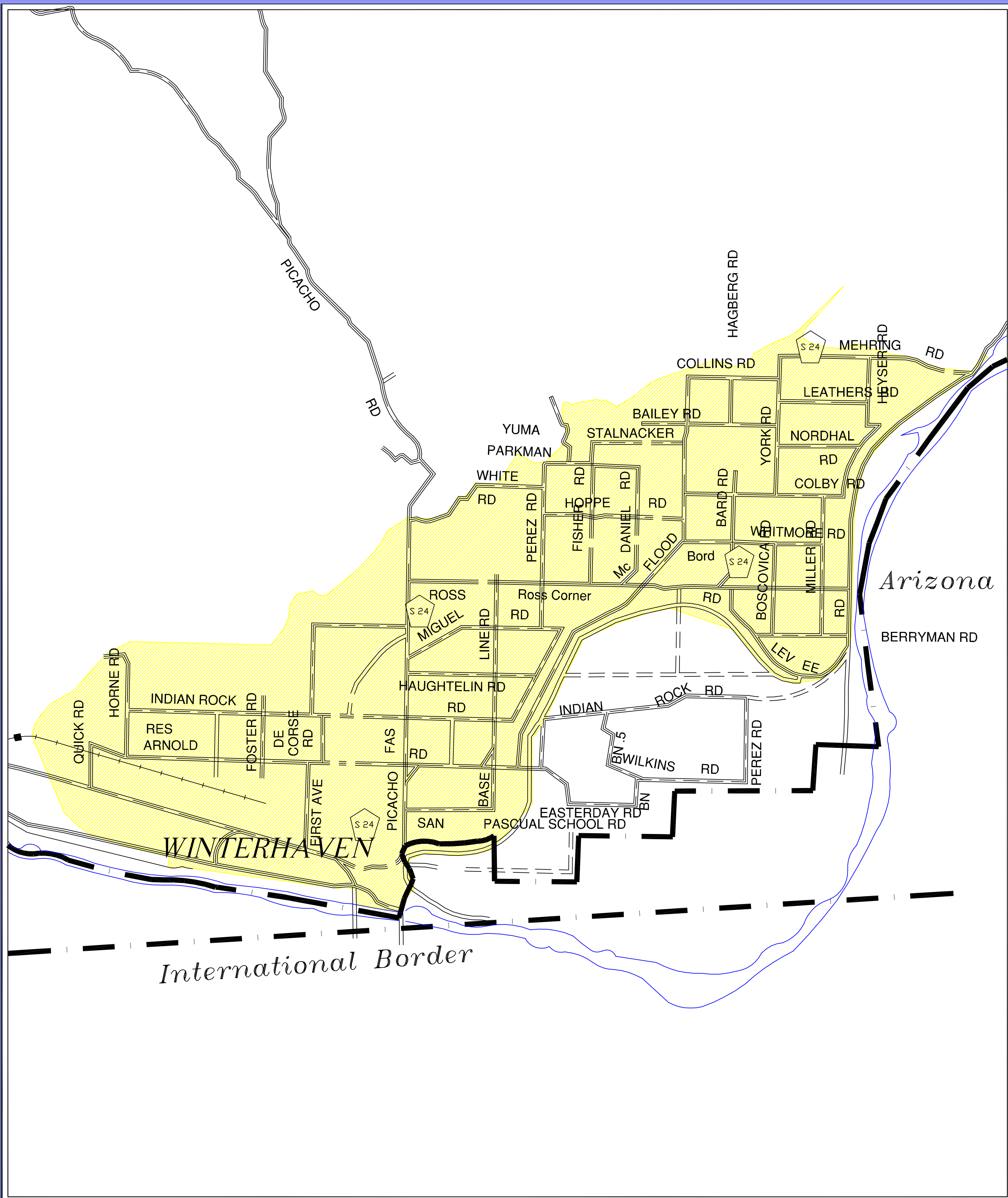
CHAPTER VIII

SPECIAL DISTRICTS IN IMPERIAL COUNTY

The following is a summary of Special Districts currently in service in the County of Imperial. While all information was updated in April 2013, some names and/or telephone numbers may change.

SERVICE AREA:
BARD WATER DISTRICT

- ADDRESS:** 1473 Ross Road
Winterhaven, CA 92283
- CONTACT:** Ron Derma, General Manager
Phone: (760) 572-0704
Fax: (760) 572-0183
E-mail: bardwater@aol.com
- ENABLING LEGISLATION:** California Water Code Section 34000 et seq.
- DATE OF FORMATION:** November 20, 1973
- GOVERNING BOARD:** Board of Directors consists of five members elected at large to serve four-year terms. Members of the governing board must be a holder of title to land within the district. Vacancies are filled by the remaining members, for the unexpired term.
- POWERS & FUNCTIONS:** May acquire, plan, construct, maintain, operate, and improve necessary works for the production, storage and transmission of water for domestic, irrigation, municipal or industrial purposes; may acquire construct, operate and maintain facilities and services for the collection, treatment and disposal of sewage, waste and storm waters; may provide reclaimed water for use.
- PRESENT OPERATIONS:** Acts as distributor of water for domestic and irrigation purposes within the perimeters of the district. This district lies adjacent to the Colorado River north of Winterhaven. Technical advice is furnished by the Bureau of Reclamation in Yuma.
- BOUNDARY:** *(See Attached Map)*

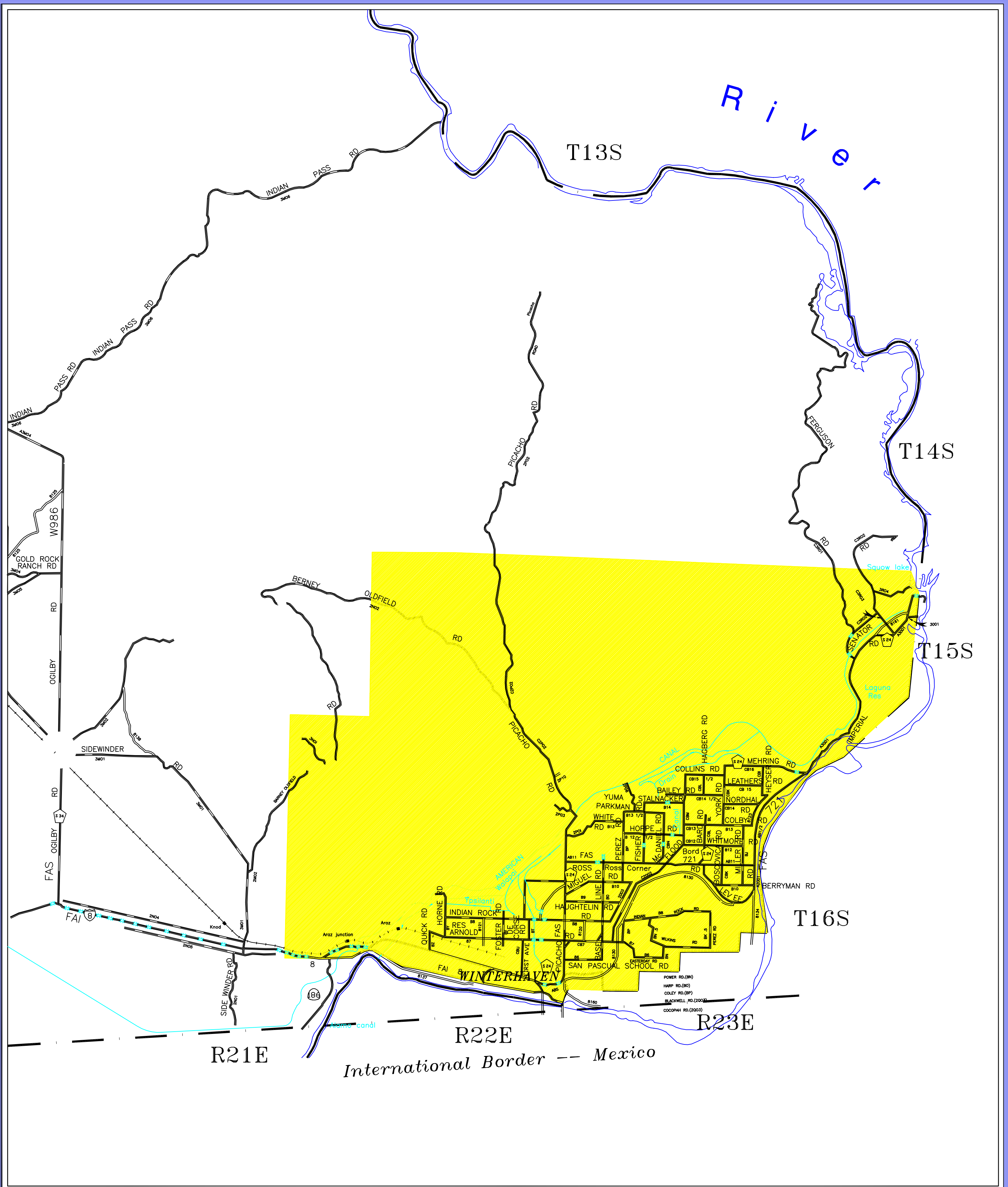


Bard Water District
 local agency formation commission

EXHIBIT 1

SERVICE AREA:
BARD RESOURCES CONSERVATION DISTRICT

- ADDRESS:** P.O. Box 776
Bard, CA 92222
- CONTACT:** Ronald Hill, Chair
Phone: (760) 572-0704
Fax: (760) 572-2292
Email: hbardorian@aol.com
- ENABLING LEGISLATION:** California Public Resources Code Sections
9060-9360
- DATE OF FORMATION:** June 15, 1953
- GOVERNING BOARD:** Board of Directors consists of five members elected to serve four-year terms. Vacancies of appointed directors are filled for the un-expired term by the Board of Supervisors. A vacancy in office of director who has been elected shall be filled pursuant to Section 1780 of the Government Code of the State of California.
- POWERS & FUNCTIONS:** To carry on a community-wide program under local control concerning soil and water conservation in the district; may enter into contracts or agreements with the State, the United States, any county or other district; may tax land; may sue or be sued; may acquire, lease and dispose of lands and property; will develop soil and water conservation plans.
- PRESENT OPERATIONS:** Formulates policies for the conservation of soil and water within the confines of the district; to conserve soil and water by direct assistance to farmers and ranchers and to urban areas when requested. The Bureau of Land Management assists with advice and technical expertise.
- BOUNDARY:** *(See Attached Map)*



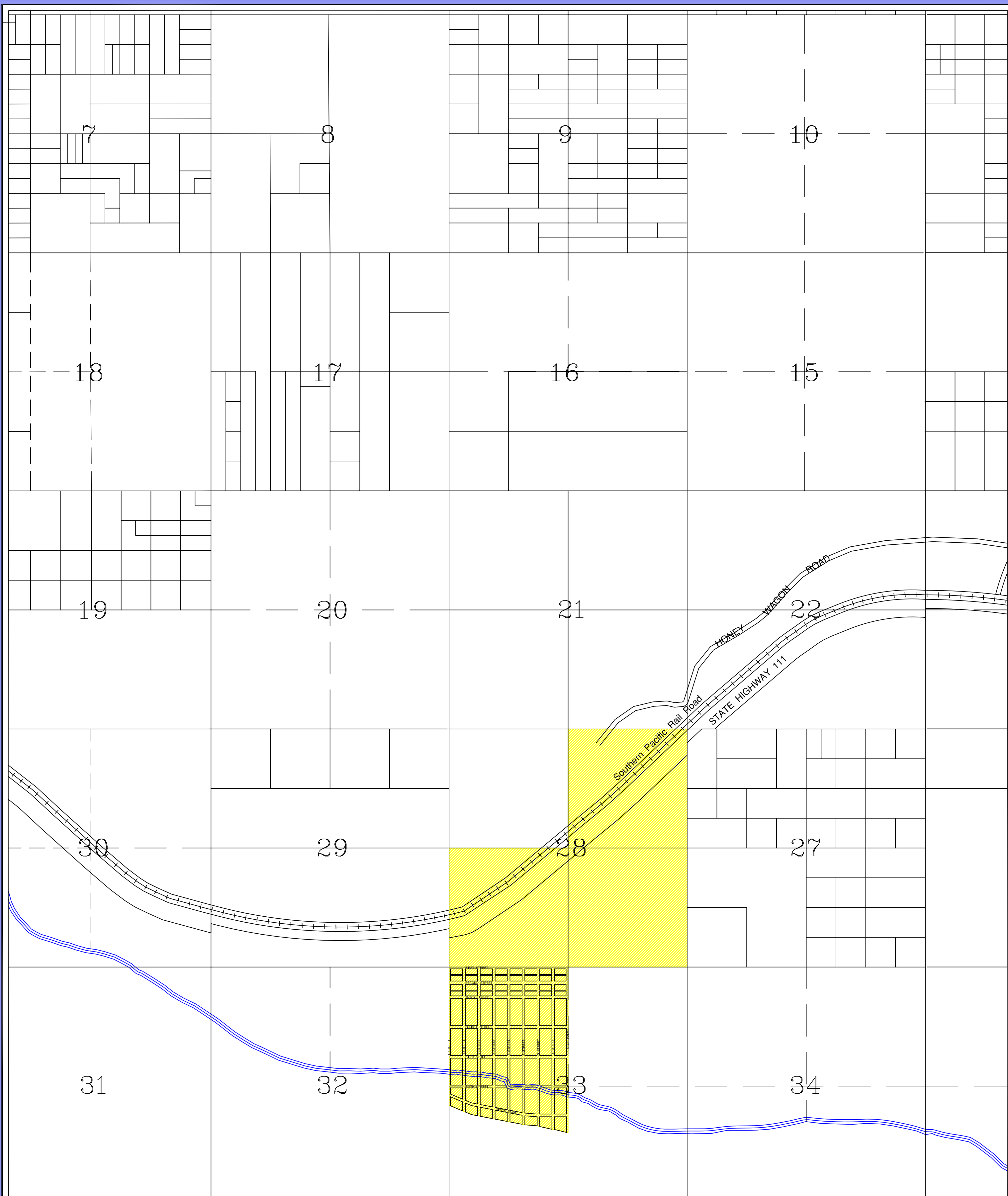
Bard Resource Conservation District
 local agency formation commission

EXHIBIT 2

SERVICE AREA:

BOMBAY BEACH COMMUNITY SERVICES DISTRICT

- ADDRESS:** 9590 Avenue "C"
Niland, CA 92257
- CONTACT:** Frank Raymond, Treasurer
Phone: (760) 354-1351
Fax: (760) 354-1812
- ENABLING LEGISLATION:** California Government Code Section 61000, et seq. (Community Services District Law)
- DATE OF FORMATION:** August 7, 1961
- GOVERNING BOARD:** Board of Directors consists of five members elected at large. The directors serve alternating four-year terms. Vacancies in the office of director shall be filled by appointment by the remaining directors, subject to the provisions of Section 1780 Government Code of the State of California.
- POWERS & FUNCTIONS:** To supply the inhabitants of the district with facilities for sanitation, industrial use, fire protection, recreation, sewage and storm water disposal; may acquire real and personal property to perform these functions; may incur bonded indebtedness.
- PRESENT OPERATIONS:** Provides municipal type services for residents of the Bombay Beach area. Water for domestic use and irrigation is provided by the Coachella Valley Water District with main offices in Coachella, Riverside County.
- BOUNDARY:** *(See Attached Map)*

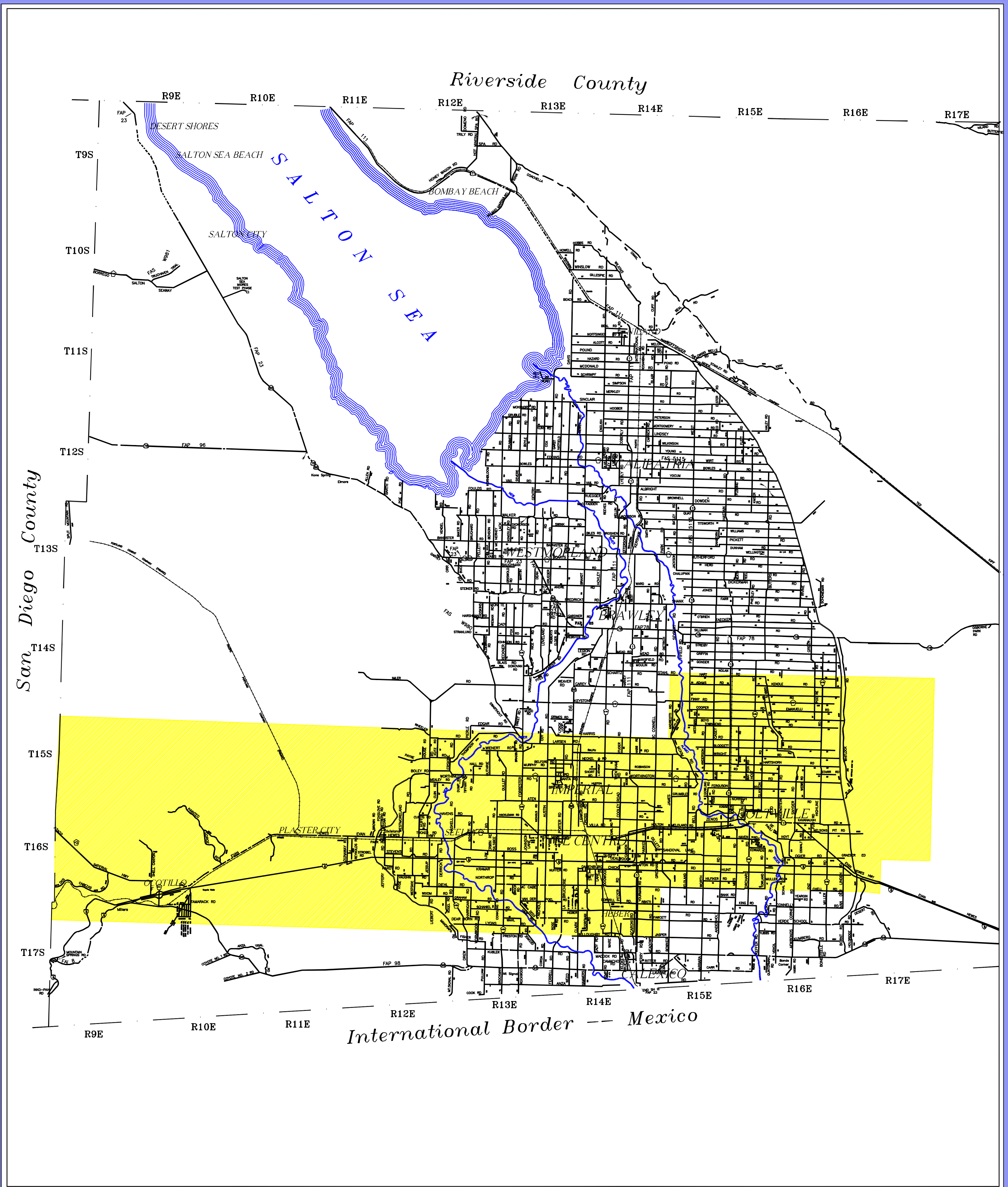


Bombay Beach Community Service District
local agency formation commission

EXHIBIT 3

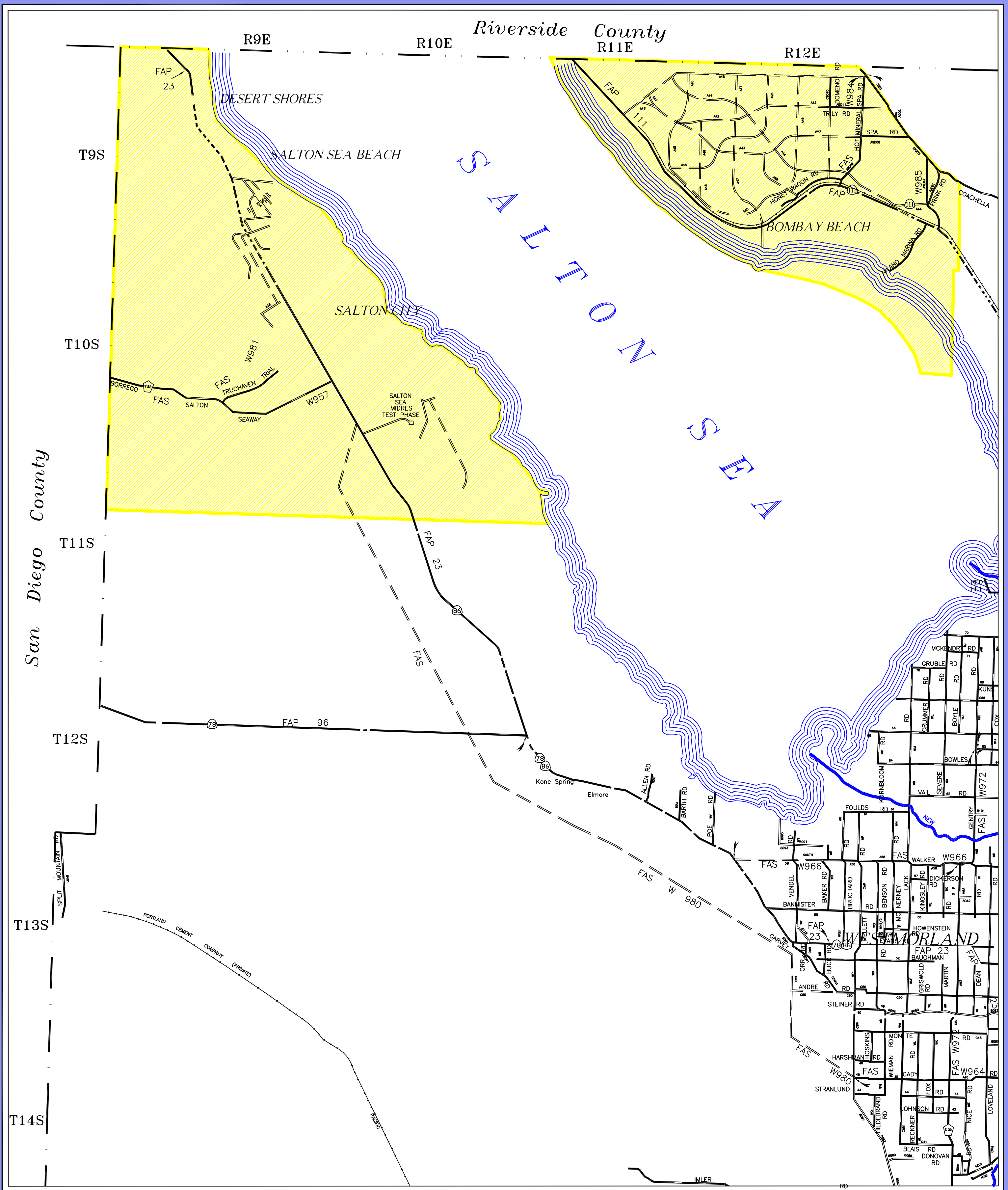
SERVICE AREA:
CENTRAL VALLEY CEMETERY DISTRICT

- ADDRESS:** 201 E. Gillett Road
El Centro, CA 92243
- CONTACT:** Chuck Jernigan, Superintendent
Phone: (760) 352-1468
Fax: (760) 352-1505
Email: chuck.jernigan@gmail.com
- ENABLING LEGISLATION:** Health & Safety Code Section 8890-9309
- DATE OF FORMATION:** December 20, 1937
- GOVERNING BOARD:** Board of Trustees consists of three members appointed to a four-year term by the Board of Supervisors. A vacancy shall be filled by a person selected by the Board of Supervisors.
- POWERS & FUNCTIONS:** The district may sue or be sued. Maintain a cemetery or cemeteries, limited in use to burial in the ground of residents or taxpayers of the district or former residents or taxpayers of the district who purchased lots or plots while residents or taxpayers of the district or members of their families.
- PRESENT OPERATIONS:** Maintain Evergreen Cemetery east of El Centro; Terrace Park Cemetery west of Holtville and Imperial Cemetery east of Imperial.
- BOUNDARY:** *(See Attached Map)*



SERVICE AREA:
COACHELLA VALLEY WATER DISTRICT

- ADDRESS:** P. O. Box 1058
Coachella, CA 92236
- CONTACT:** Steve Robbins, General Manager
Phone: (760) 398-2651
Fax: (760) 398-3711
E-mail: srobbins@cvwd.org
- ENABLING LEGISLATION:** California Water Code Section 33100 et seq.
- DATE OF FORMATION:** October 19, 1937 and Statutes of 1949, c. 274, p. 552.
- GOVERNING BOARD:** Board of Directors consists of five members elected at large to serve four-year terms. Vacancies are filled by appointment of the remaining directors elected.
- POWERS & FUNCTIONS:** To furnish water for present and future uses; to acquire water rights; store and conserve water; salvage storm and sewage water; operate sewage facilities and irrigation works; operate recreational and fire protection facilities; reclaim lands; form improvement districts; and in addition has all of the powers and duties of a storm water district as now or hereinafter provided in the Storm Water District Act of 1909.
- PRESENT OPERATIONS:** The principal area of the District lies within Riverside County. The portion with Imperial County lies within the area of Desert Shores, Salton City and from Bombay Beach north to the county line. The present service is to provide potable water to the residents within that portion of the Imperial County.
- BOUNDARY:** *(See Attached Map)*

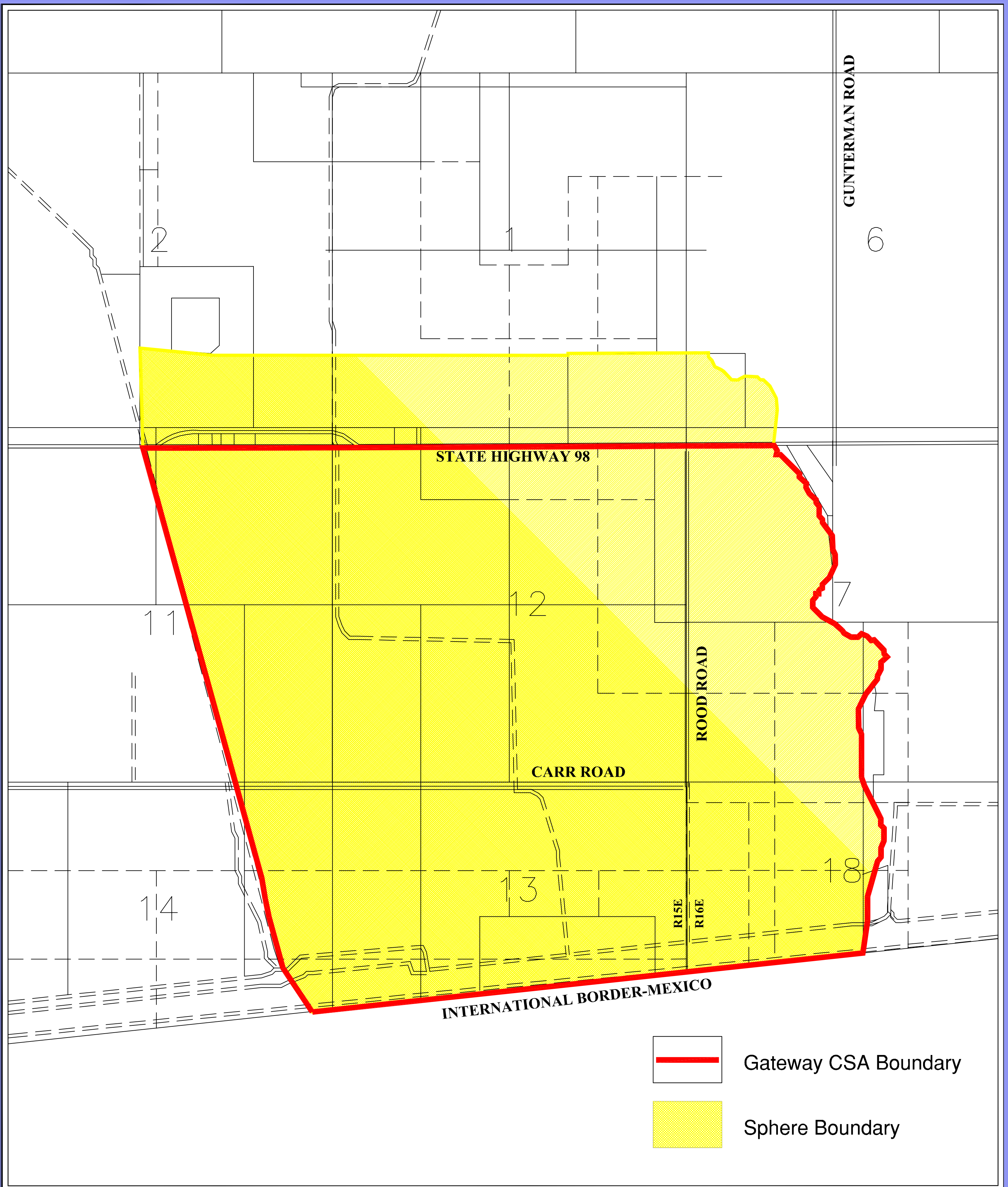


Coachella Valley Water District
 local agency formation commission

EXHIBIT 5

SERVICE AREA:
GATEWAY COUNTY SERVICE AREA

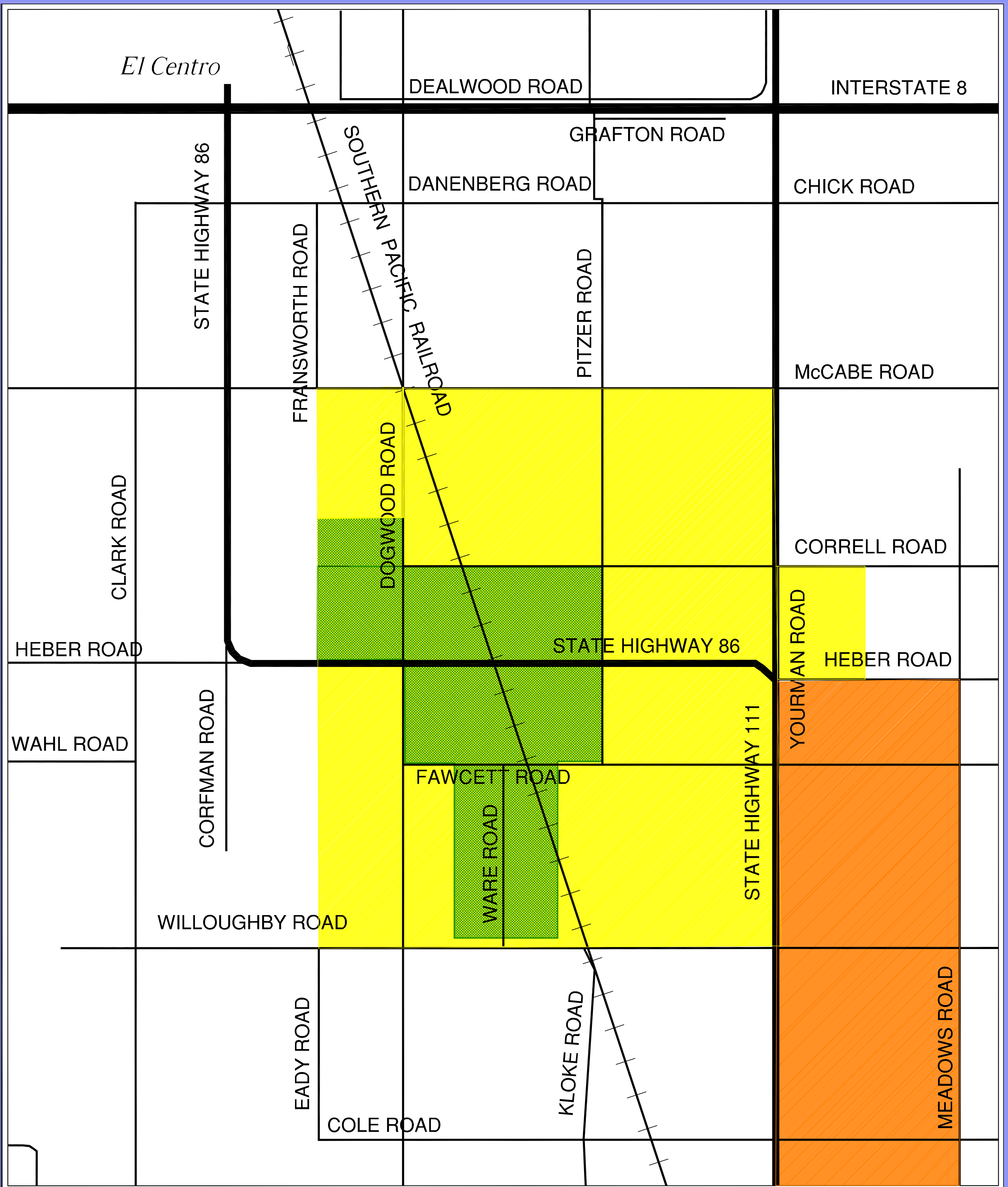
- ADDRESS:** Imperial County Executive Office
940 West Main Street, Suite 208
El Centro, CA 92243
- CONTACT:** Ralph Cordova, CEO
Phone: (760) 482-4290
Fax: (760) 352-7876
E-mail: ralphcordova@co.imperial.ca.us
- ENABLING LEGISLATION:** Government Code Sections 25210.10 et seq.,
25210.1a, 25210.4a, 25210.18, 25210.19
Resolution 97-123
Resolution 98-001
- DATE OF FORMATION:** 1997
- GOVERNING BOARD:** The governing body, which is established by law to administer the operation of a county service area, is the Board of Supervisors. The original intent of the county service area law was to give an alternative method for providing municipal type governmental services by counties within unincorporated areas (Government Code Section 25210.1).
- POWERS & FUNCTIONS:** Can sue or be sued. To provide an entity that will be responsible for the management, construction and operation of the primary infrastructure in the area, including but not limited to, water treatment and wastewater facilities and related components, street lighting and maintenance of common areas.
- PRESENT OPERATIONS:** To provide governmental services within the service area. The County Service Area consists of 1775 acres of land surrounding the new Port of Entry.
- BOUNDARY:** *(See Attached Map)*



GATEWAY - County Service Area
 local agency formation commission


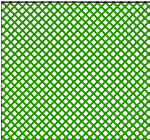

SERVICE AREA:
HEBER PUBLIC UTILITY DISTRICT

- ADDRESS:** 1078 Dogwood Road, Suite 103
Heber, CA 92249
- CONTACT:** John Jordan, General Manager
Phone: (760) 482-2440
Fax: (760) 353-9951
E-mail: jjordan@heber.ca.gov
- ENABLING LEGISLATION:** Public Utility District Act of 1921
Public Utilities Code Sections 15532 et seq.
- DATE OF FORMATION:** November 7, 1931
- GOVERNING BOARD:** Board of Directors consists of a five-member board elected at large to serve four-year terms. Vacancies are filled by the remaining directors within 90 days of the vacancy or call for an election. If neither is done within the 90 days the board shall call for an election.
- POWERS & FUNCTIONS:** To acquire, construct, own, operate, control or use works for supplying the inhabitants with light, water, power, heat, transportation, telephone service or other communication, or means for disposition of garbage, sewage or refuse matter. It may operate a fire department, public parks, public playgrounds, golf courses, public swimming pools, recreation buildings, and drainage projects.
- PRESENT OPERATIONS:** At present operating a water works and sewage system to provide water to the inhabitants of the district and to provide sewage disposal.
- BOUNDARY:** *(See Attached Map)*



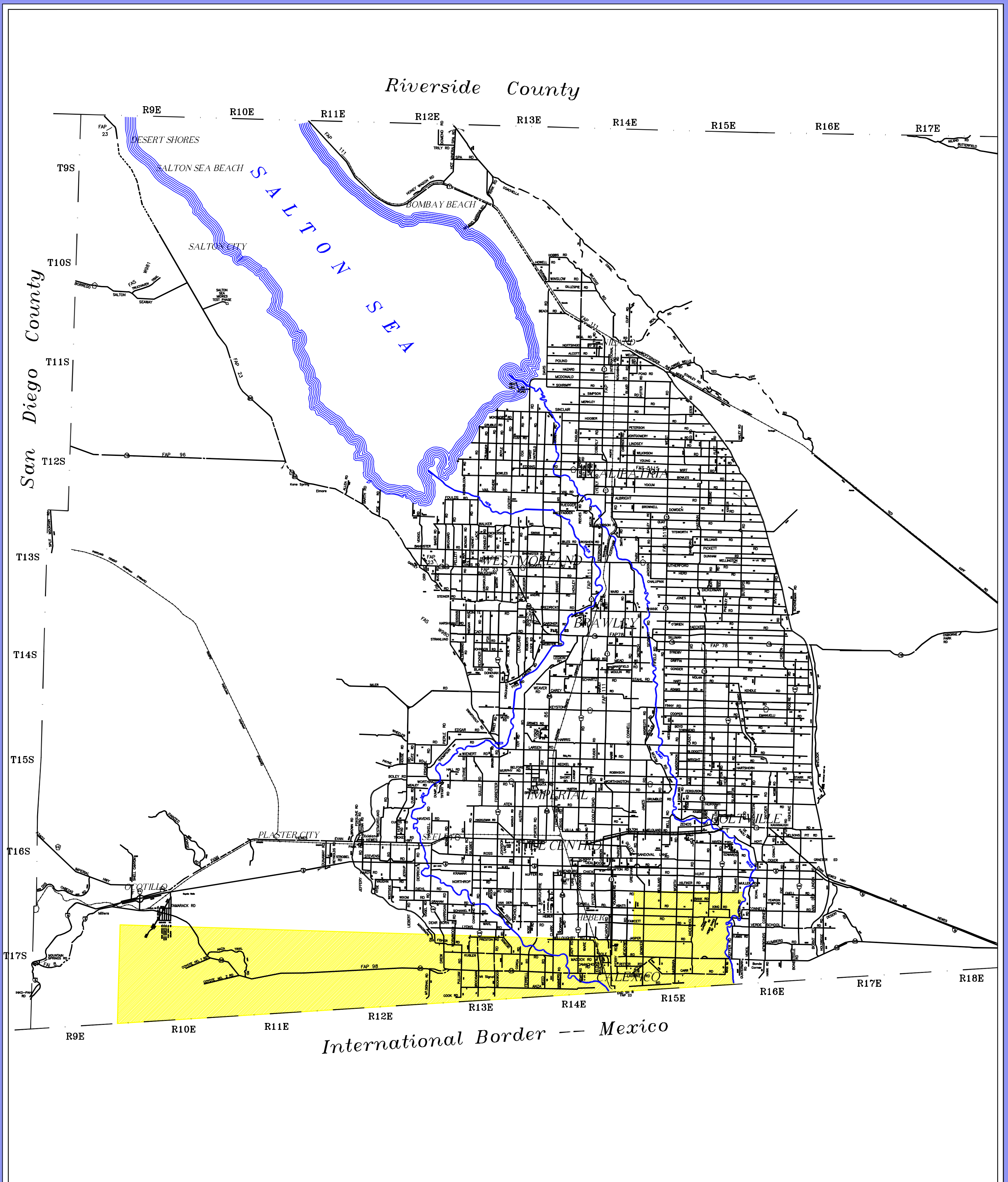
Heber Public Utility District
 local agency formation commission

EXHIBIT 7

-  HEBER SPHERE OF INFLUENCE
-  EXISTING PUBLIC UTILITY DISTRICT AREA
-  CALEXICO SPHERE OF INFLUENCE

SERVICE AREA:
HEFFERNAN MEMORIAL HOSPITAL DISTRICT

ADDRESS:	101 W Hacienda Drive Plaza, Suite 9 Calexico, CA 92231
CONTACT:	Norma M. Apodaca <i>Phone:</i> (760) 357-6566 <i>Fax:</i> (760) 357-0849
ENABLING LEGISLATION:	California Health & Safety Code Section 32000 et seq.
DATE OF FORMATION:	1947
GOVERNING BOARD:	Board of Directors consists of a five-member board elected at large to serve four years. Vacancies are filled by appointment of the remaining members of the board.
POWERS & FUNCTIONS:	May sue or be sued, purchase, lease, control, convey, encumber, property of every kind for benefit of the district; administer any trust declared or created for hospitals of the district; employ legal counsel; employ such officers and employees to carry on the business of the district; operate free clinics and health education programs; operate ambulance services and provide rules and regulations for medical staff.
PRESENT OPERATIONS:	Operating the Calexico Hospital.
BOUNDARY:	<i>(See Attached Map)</i>

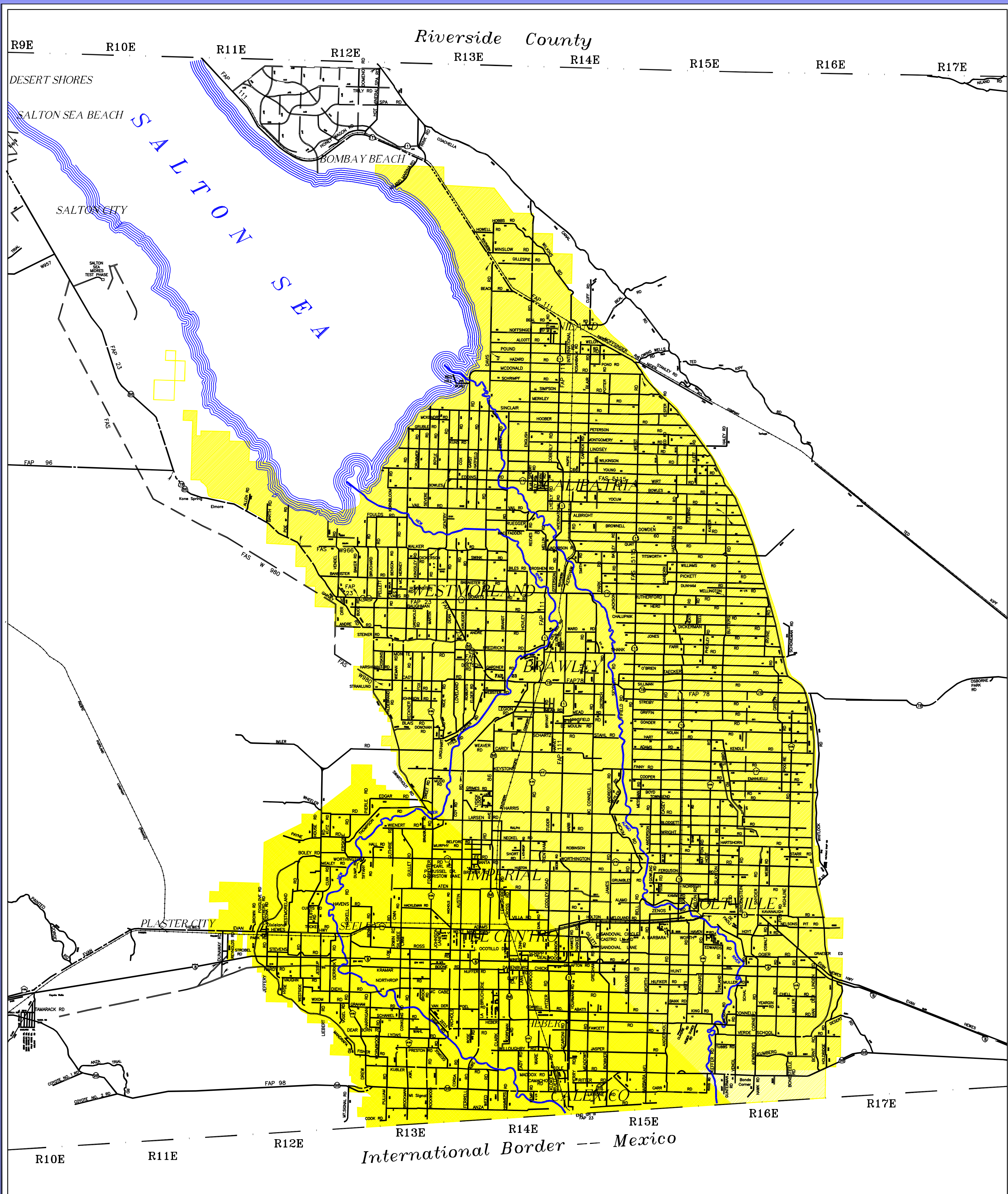


Heffernan Memorial Hospital District
 local agency formation commission

EXHIBIT 8

SERVICE AREA:
IMPERIAL IRRIGATION DISTRICT

- ADDRESS:** P. O. Box 937
Imperial, CA 92251
- CONTACT:** James C. Hanks, Board of Directors, President
Phone: (760) 339-9477
Fax: (760) 339-9392
Email: bjbrady@iid.com
- ENABLING LEGISLATION:** California Water Code 20700 et seq.
- DATE OF FORMATION:** 1911
- GOVERNING BOARD:** Board of Directors consists of five members elected at large to serve staggered four-year terms. Vacancies are filled pursuant to Section 1780 Government Code.
- POWERS & FUNCTIONS:** A district may control, distribute, store, spread, sink, treat, purify, recapture, and salvage any water including but not limited to sewage waters for the beneficial use or uses of the district or its inhabitants. Any district may purchase or lease electric power from any agency, public or private, and may provide for acquisition, operation and control plants for the generation, transmission distribution, sale, and lease of electric power, including sale to municipalities, public utility district, or persons.
- PRESENT OPERATIONS:** The Imperial Irrigation District includes 1,062,290 gross acres, including most of Imperial County and portions of San Diego and Riverside Counties (Coachella Valley Area). Operations are divided into a Water Division, which diverts and distributes Colorado River water to nine cities and nearly 500,000 acres of agricultural lands in Imperial Valleys and a Power Division responsible for generation and distribution of electrical power.
- BOUNDARY:** *(See Attached Map)*

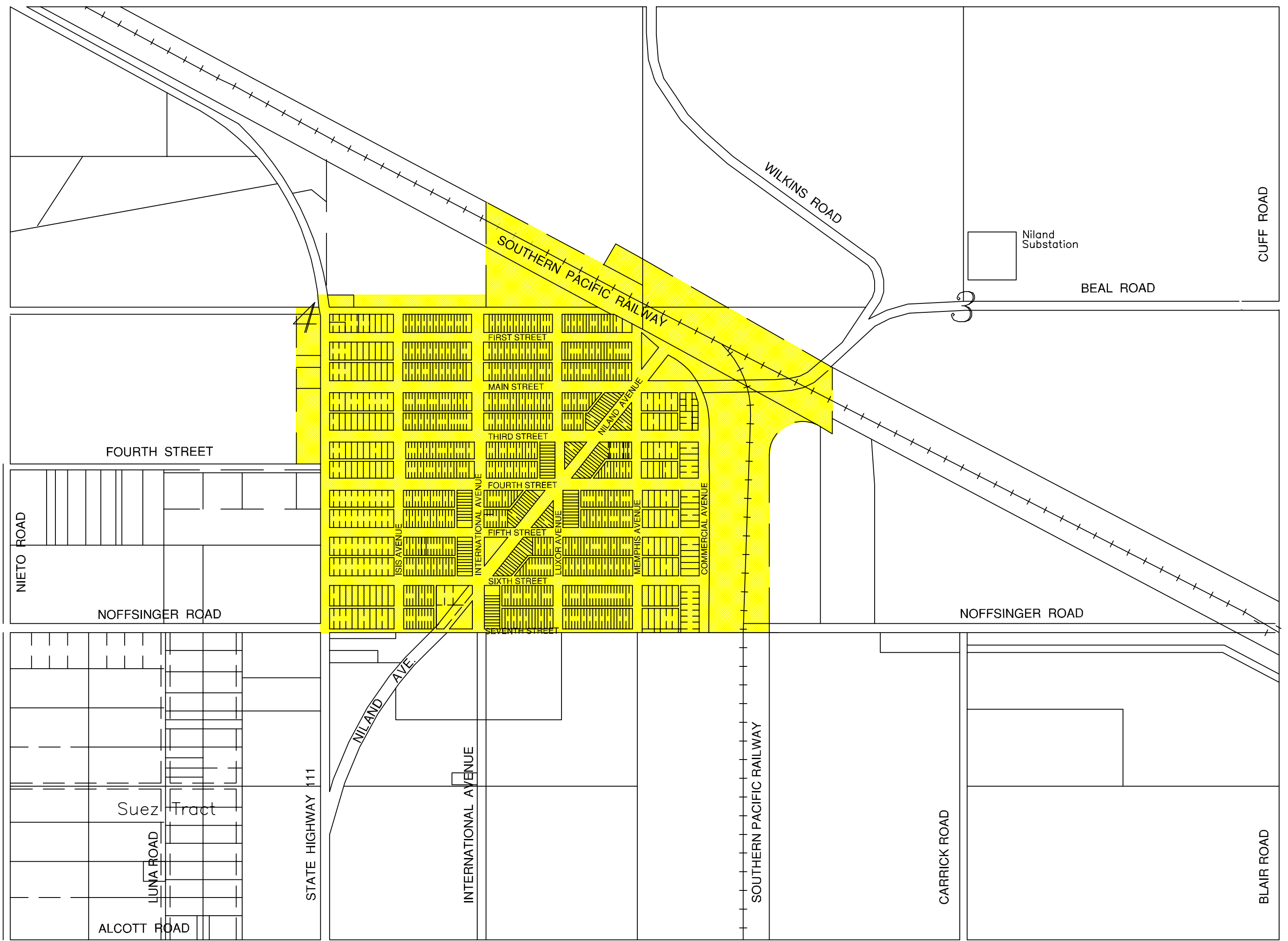


Imperial Irrigation District
 local agency formation commission

EXHIBIT 9

SERVICE AREA:
NILAND COUNTY SERVICE AREA NO. 1

ADDRESS:	Imperial County Public Works 155 South 11 th Street El Centro, CA 92243
CONTACT:	William Brunet, Director Imperial County Public Works <i>Phone:</i> (760) 482-4462 <i>Fax:</i> (760) 352-1272 <i>Email:</i> williambrunet@co.imperial.ca.us
ENABLING LEGISLATION:	Government Code Sections 25210.1 et seq.
DATE OF FORMATION:	December 13, 1978
GOVERNING BOARD:	Imperial County Board of Supervisors
PRESENT OPERATIONS:	This county service area was formed for the purpose of providing street lighting for the community of Niland, an unincorporated area located in northern Imperial County, on State Highway No. 111, and the main line of the Southern Pacific Railroad. The Department of Public Works administers the service area.
BOUNDARY:	<i>(See Attached Map)</i>



Niland County Service Area No.1
 local agency formation commission

EXHIBIT 10